

Farmco Precision Size Grader

The Farmco [Precision Size Grader \(PSG\)](#) accurately size grades damage-sensitive food products by diameter. Using a combination of precision-machined stainless steel rollers and a unique pinch-eliminating drive arrangement, the PSG offers consistent, uniform separation of target size material.

The size for separation, selected by the customer, is determined by the gap between the rollers – target size product falls through the rollers and exits underneath the machine, while larger size material moves over the top of the rollers.

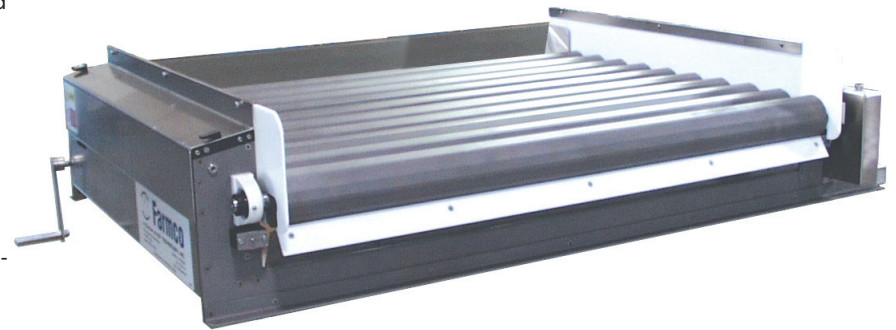
The Precision Size Grader features exceptional sizing accuracy with on-the-fly adjustability, space-saving compact footprint, and little or no annual maintenance required.

The PSG is suitable for sizing a wide variety of delicate vegetables, fruits, and other products. With approximately .2 millimeters (.008”) of roller gap adjustment per complete rotation of the adjusting handle and its simple but robust design and construction, the PSG provides processors the ability to meet their customers’ exacting specifications throughout their process season – year after year.



Benefits

- Precision Sizing
 - Stainless steel rollers machined to exacting tolerances
 - Consistent sizing and absolute control
- Easy Operation
 - Efficient sizing and separation; no screens to blind or plug
 - On-the-fly adjustment with precise fine-tuning
 - Precision adjustment within thousandths of an inch
- Low Maintenance
 - Long-life stainless steel rollers are self-cleaning on most applications
 - Sealed corrosion-resistant bearings inside frame require no regular lubrication
 - Easy access to bearings, chain, sprockets and adjusting system
 - simply remove side covers and plastic liners with four fasteners
 - Very few moving components or wearing parts
- Easy, thorough sanitation
 - Requires only a hose washdown
 - Easy access to all components with open sizing area design
 - No bars, slats or bushings to clean inside machine
 - No screens to change
 - No parts to remove



Key Technology

150 Avery Street • Walla Walla, WA 99362 • USA

Phone: 509.529.2161 • Fax: 509.527.1331 • product.info@key.net • www.key.net



Specifications & Information

- Capacity: Varies by application and requirements
 - Model PSG-510: up to 6800 kg/h (15,000 lb/h) typical
 - Narrower models to be available for lower capacities
- Efficiency: 95% plus within .3969mm (1/64 inch)
- Standard adjusting range: 4.8 mm to 14.3 mm (3/16" to 9/16")
- Dimensions:
 - Overall width: 2394 mm (94-1/4")
 - Bed width: Up to 1499 mm (59")
 - Overall length: 1441 mm (56-3/4")
 - Overall height: 451 mm (17-3/4")
- Style: Platform model. Legs, stands, chutes, hoppers, etc., not included
- Construction: Stainless steel, food grade
- Motor/Gearbox: 1 hp

