



Comprehensive Equipment Audits

Increase equipment efficiency and prevent unplanned downtime.

Proactive maintenance is crucial to ensuring you're getting the most out of your equipment and keeping your plant running efficiently. To prevent unplanned downtime and be certain your equipment is in optimal condition, we recommend an annual Equipment Audit.

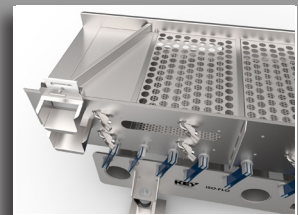
These comprehensive audits are performed by our certified SupportPro Service Technicians and cover every detail of the condition and operational performance of your Key Technology equipment. Including:

Digital Sorters

- User Interface
- Computer System
- Housing Assembly
- Utility Enclosure
- CIP System
- Conveyor Belt & Frame
- Ejection System
- Lighting System
- Vision System
- Electrical Inspection
- In-feed Conveyor
- Any Accessories

Vibratory Conveyors

- Physical Condition
- Design vs. Running Stroke
- Design vs. Running Frequency
- Frequency Inverter
- Arm Springs & Shims



SUPPORTPRO

A DURAVENT SERVICE

www.key.net/supportpro | service@key.net | +1 877 878 4631